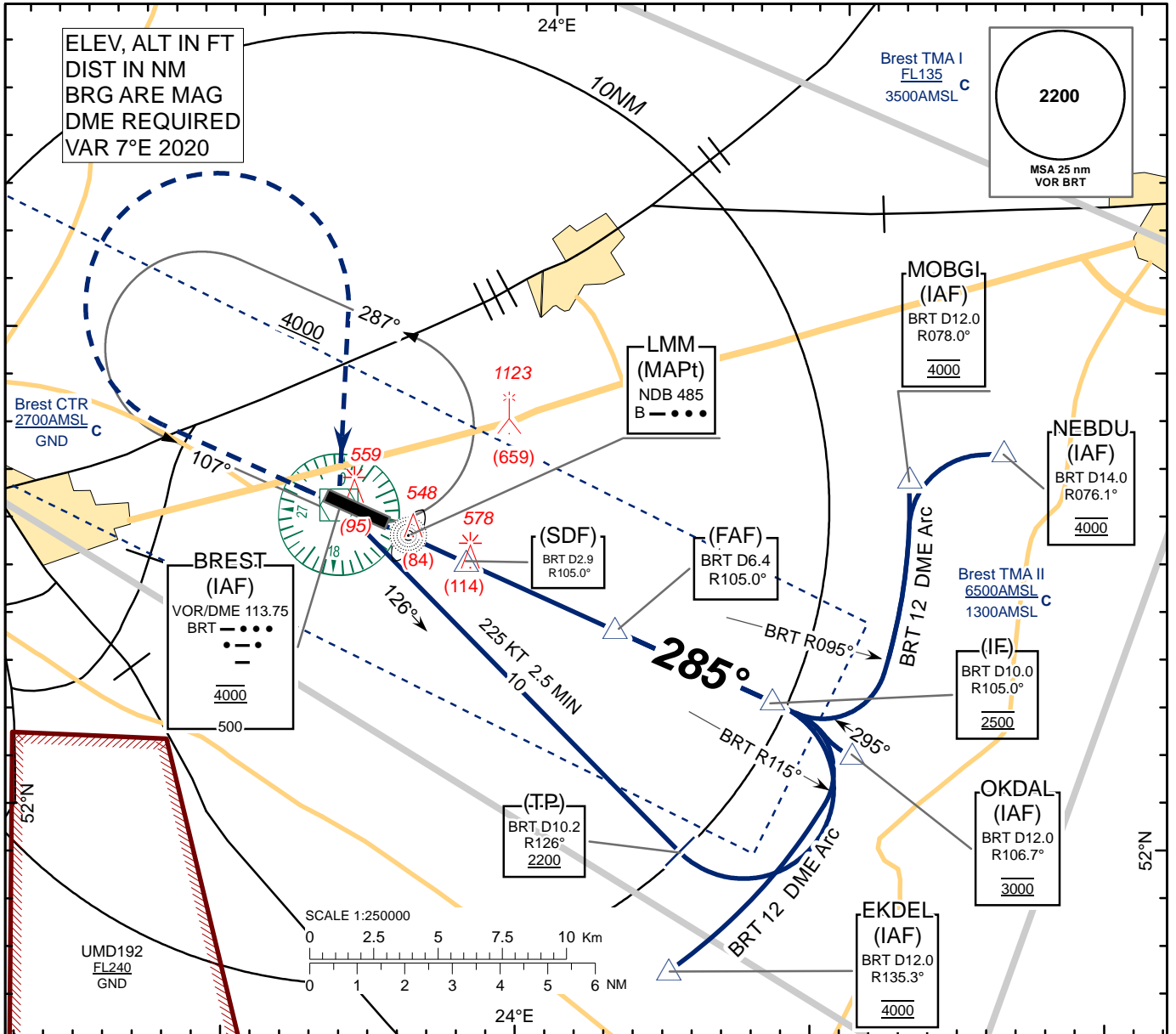


**INSTRUMENT
APPROACH
CHART - ICAO**

AERODROME ELEV 469
HEIGHTS RELATED TO
THR RWY 29 - ELEV THR 464

TWR 127.700
MET 136.525 (EN)
118.225 (RUS)

**BREST
VOR
RWY 29**

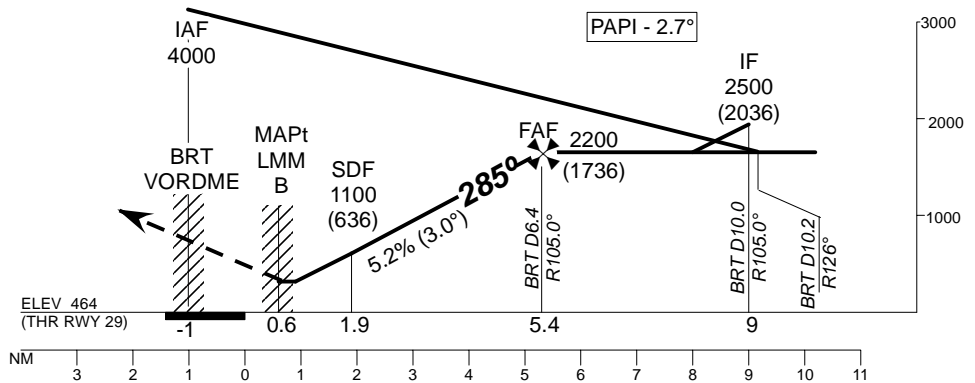


TRANSITION ALTITUDE: 6000

Alt set: hPa (mm on req)
QNH (QFE on req)

MISSED APPROACH

Climb on track 285°
to 1500 (1036) or above,
turn RIGHT to (IAF) BRT
climbing to 2200 (1736)
and follow ATC instructions.



CHANGES: Measurement year of MAG VAR; Coord LMM B.

Aircraft Category	A	B	C	D	BRT	7	6	5	4	3	2
Straight-in Approach OCA(H)	830 (370)				DIST THR	6	5	4	3	2	1
					ALTITUDE	2200	2090	1770	1450	1140	820
					HEIGHT	(1736)	(1626)	(1306)	(986)	(676)	(356)
Circle - to - land	950 (480)	1420 (960)	1520 (1050)	1520 (1050)	Timing not authorized for defining the MAPt						
	GS	Kts	80	100	120	140	160	180			
	Desc.Rate(5.2%)	ft/min	420	530	630	740	840	950			

BREST
VOR
RWY 29

AERONAUTICAL DATA TABULATION

VOR approach to RWY29 from BRT VOR/DME, MOBGI, NEBDU, OKDAL, EKDEL	
Fix/point	Coordinates
MOBGI(IAF) R 078.0° D12.0 BRT	520735N 0241240E
OKDAL(IAF) R 106.7° D 12.0 BRT	520144N 0241104E
EKDEL(IAF) R 135.3° D 12.0 BRT	515704N 0240507E
NEBDU (IAF) R 076.1° D14.0 BRT	520812N 0241550E
(IF) R 105.0° D 10.0 BRT	520248N 0240817E
(FAF) R 105° D6.4 BRT	520410N 0240250E
(SDF) R 105° D2.9 BRT	520528N 0235740E
(TP) R 126.0° D10.2 BRT	515936N 0240522E
BRT VOR/DME	520633.7N 0235315.7E
(MAPt) B LMM	520558.6N 0235540.3E
THR RWY 29	520612.51N 0235449.45E